

# SPA News

May 2019

## SPA Inter-Club PDI 2019

The inter-club pdi competition was held on Saturday, May 11th in East Horsley.

The judges for both Open and Nature were:

Leo Rich ARPS DPAGB HonPAGB EFIAP/g  
Ken Scott ARPS  
Daphne Hansen DPAGB APAGB

Twenty-five clubs competed in the Open Section and the top six were separated by just five marks.

The winning club was Richmond and Twickenham with 181,  
second was Windlesham and Camberley with 180  
and third Yateley with 179.



The best image overall was Daan Olivier's 'Unhugged and Dangerous': the only image in the Open competition to score 14. Daan is a member of Windlesham and Camberley CC.



Nineteen clubs competed in the Nature Section, with Epsom winning with 92 points, then Godalming and Woking tying with 91. The top five clubs in this section averaged 11 marks or more as did six in the Open Competition.

The best Nature image - 'Goldfinch with fledgling' - came from Mike Young of Ludshott Photographic Club

## PAGB Inter-Club PDI Competition - Warwick, July 13th 2019

As those who were at the recent SPA ICC Championships at East Horsley would have heard from David Smith, the SPA are again offering a £5 subsidy for tickets for this event. Why not come along to see the best of club photography and support our two competing clubs, Godalming PC and Kingston CC who were winners and runners-up respectively in last year's SPA ICC in PDIs. All you have to do is buy a ticket from the PAGB and let the SPA Treasurer, John Hoskins know so that he can have the cash ready at the venue. Just email him on [treasurer@surreypa.org.uk](mailto:treasurer@surreypa.org.uk). The link for the tickets is <http://www.thepagb.org.uk/competitions/inter-club-pdi/>. See the second paragraph for the link "HERE". This year they cost £11. The competition starts at 10.15.

# Agnès Proudhon Smith

*It was in Thailand that I first read of a tragic accident on a Scottish island. I saw that a photographer had died, but there was no name. It was with real sorrow the next day that I read the name.*

*I didn't know Agnès personally, but I had seen and enjoyed her photography in some of our recent SPA competitions: her skill and her name could not easily be forgotten.*

*Our Treasurer, John Hoskins, knew Agnes well and we felt he would be an appropriate person to pay tribute to her.*

*John writes:*

*'Agnès died on 20 March in a tragic accident while on a photography workshop in the Isle of Harris. She was swept out to sea after being hit by a freak wave as she was photographing waves from rocks on the beach. She had been a member of Molesey PC since 2015, and the following year also joined Kingston CC and Richmond & Twickenham PS so that she could widen her experience, but continued to represent her first club in competitions.*



*On a trip to Greenland: cameras at the ready*

She had gained her Associateship just two weeks before her death, with a monochrome panel of prints of the Valencia City of Arts & Sciences which was so successful that the RPS asked to retain it for use at assessment days.

Photography was her passion. Her website shows the extent of her talent and the many countries she visited in the pursuit of her interest, particularly travel photography and the natural world -

<https://www.funphotostudio.co.uk/travel>

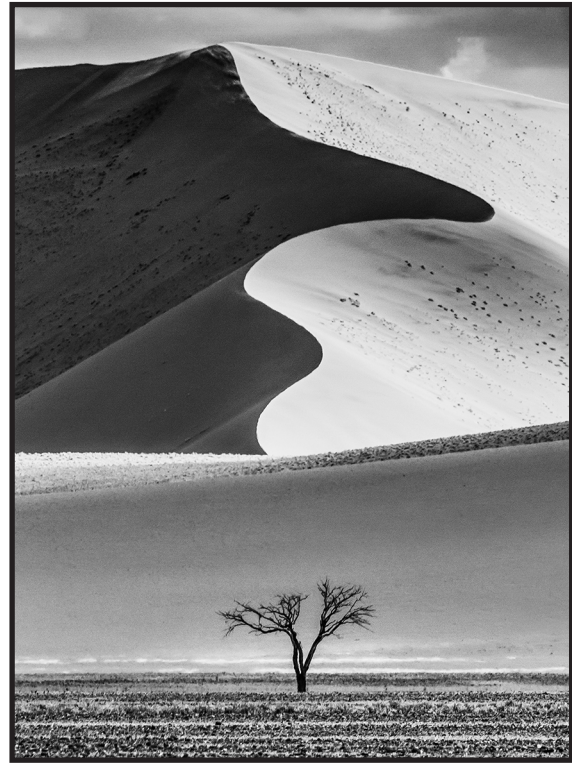


*Lake Baikal Sunrise*

# A Tribute



*Varanasi Sadhu*



*Desert Curves*

She was brought up in Paris, developing an interest in photography at an early age, and was very pleased to be able to study it at school when she spent many hours in the darkroom perfecting her prints. She later moved to the South of France where she met her future husband, Steve, and moved to England in 1995.

After working for a French company here she decided to follow her real interest and set up a family portrait business in 2003 which became very successful. But her passion was travel photography, and the natural world in particular. Her first major trip was in 2011 when she visited and photographed the parks and canyons of the American West, with her two sons, and in more recent years had visited Antarctica, Svalbard and Lapland, Morocco, Siberia (Lake Baikal), Iceland, Namibia, Chile, Bolivia, Easter Island, Finland, UAE, India, Myanmar and Greenland, twice, producing memorable images each time, as well as more local trips to place such as the Camargue, Venice, Northern France, and of course Valencia. She had returned from Greenland only two days before her RPS Assessment. As well as landscape and wildlife images, she captured many excellent portraits of local people such as the Himba women of Namibia, the Loikaw women of Myanmar and some memorable images from India, such as from the Holi festival.

In her clubs, she won the Intermediate class annual print competition in Molesey in her first year and went on to win the Advanced PDI class in each of the following two years when she was also second and third in prints respectively, as well as winning several exhibition awards. She also won exhibition trophies and annual competitions at Kingston and Richmond & Twickenham, and held eight trophies at the time of her death. She had also won five SPA Judges' awards in various Individual competitions.

Outside club photography, Agnès had been successful in competitions such as the Outdoor Photographer of the Year, with 11 images shortlisted this year, and had started to enter FIAP salons, gaining several acceptances, including an award in one for a nature image.

Agnès will be greatly missed by all those who knew her.  
Our thoughts are with Steve and her two sons, Elliot and Lucas.

# Bringing a club's images to a wider public



Since 2012 Reigate Photographic Society has developed a programme of permanent or semi-permanent public displays of its members' prints. This builds on its long-established annual exhibition on the last Saturday in October, and participation in biennial exhibition weeks run by the local Arts Council.

It was prompted by two developments. For many years the Society has held its meetings in one of the schoolrooms below the Methodist Church in Reigate High Street. In 2011 this was linked into a new Community Centre built at the rear of the existing buildings, opening up corridor space for a semi-permanent exhibition of up to 30 prints by the Society's members, as some of the Centre's community users. While it has to take its turn with others wanting to use this space, the Centre's managers know they can always call on the Society to respond when no other group has anything to offer. In practice the display has continued at regular intervals.

This venture was settling down as the Committee was starting to plan the Society's 75th Anniversary activities in 2013. These included seeking opportunities to raise public awareness of the Society through a wider placement of its prints. In late 2012 17 were hung in one of the rooms for public hire at the Harlequin theatre in Redhill, and around the time of the 75th Anniversary in mid 2013 a further 6, with a flowers theme, were placed in a Reigate florist's shop at the personal initiative of a former Society Chair. He followed this in early 2014 with placements of 7 images

in the florist's Redhill branch, and 5 in a Reigate optometrist's shop.

The resulting wider awareness of the Society's work led in 2015 to a request to display some prints in the corridors of the staff offices at Reigate Town Hall, and by the end of that year a further 17 prints had been hung there on two floors. Finally, in March 2019, at the suggestion of its management, 66 prints were displayed on the walls of an access corridor at the Belfry shopping centre in Redhill - by far the biggest placement to date. Though this does not carry the main footfall of the Centre (if it did it would be full of commercial activity) the route is regularly used, and early signs are that many people are stopping to have a look. As with all the larger placements where the images can be viewed close up, a panel gives details of the Society and its seasonal meetings.



## – how they do it at Reigate

With up to nearly 150 prints now on display this amounts to a sizeable programme. Not surprisingly it requires a fair amount of work from a small team of dedicated members. It aims to refresh the displays by moving them around every 5-6 months. All the frames have been supplied by the Society with the exception of those at the optometrist's, in the Town Hall and at the Belfry Centre – the latter where prints have most direct exposure to the passing public but relatively less supervision. The Belfry management supplied the frames, which are screwed to the wall, not hung. Time will tell if this degree of unsupervised exposure proves a problem.



While there is no direct evidence of a boost to Society membership, this has been steadily growing in recent years. Exposure of its work to the wider public by casual contact, and not just to those choosing to visit the traditional annual or biennial exhibitions at a single location, must be a positive factor. And, importantly, evidence of this community outreach has been an important asset to the Society's occasional bids for local Arts Council funding for equipment such as new exhibition display boards. An incidental benefit has been the possibility of sales of the prints on display, though very few have in fact been sold. All the authors are named and a contact point for sales is given on the print labels.

This initiative is not without its problems. Keeping the displays regularly refreshed, maintenance of the frames and preparing labels adds up to a sizeable task, and the commitment and efforts of those members involved is highly appreciated in the Society. Longer-term, maintaining the



flow of prints may become problematic. Their popularity relative to PDIs does seem to be slipping in the Society's competitions, not least among newer and younger members, who perhaps lack the extra time, and sometimes the resources, to print or have them printed and mounted. (Or wrestle with temperamental printers?).

But for now this has proved a worthwhile and successful venture that is effectively raising the Society's profile across a wider range of the local community than could be reached in annual exhibitions at a single location.

If any SPA clubs would like to know more, or perhaps look at some of our displays, they should contact Colin Hodsdon at [mail2hodsdon@gmail.com](mailto:mail2hodsdon@gmail.com).

*I am very grateful to **Lester and Carol Hicks** for providing this article, which I hope will be of interest to many Clubs looking for ways to contribute to their local community while taking an opportunity to celebrate their work.*

*This is exactly the sort of good practice we would like to share.*

*Any further examples will be very welcome. Please send to [newsletter@surreypa.org.uk](mailto:newsletter@surreypa.org.uk)*

# BPE ??

*It was as a result of a discussion recently with David Smith, SPA President, that we decided to try to celebrate success at all levels in the Newsletter. At the recent Inter-Club competition we asked Clubs to pass on any information they had, acknowledging that we always know about PAGB results but never about anything else. When Rosemary Wilman told me that she had achieved the ABPE award, I asked her to explain it for those of us who know little or nothing about the BPE circuit. Rosemary writes:*



As an experienced club photographer this is an opportunity to see how your images are received at national level. Exhibitions offer either a catalogue or CD to all entrants and most place awards on their websites. I have supported this exhibition circuit for many years and enjoy seeing the most successful images which are selected. Sometimes an image may spark an idea, although I do not like to follow fashion. This could also help you, and perhaps your fellow club members, explore and develop new ideas. I have enjoyed entering for many years and am sure it has helped progress my photography beyond the club environment.

All the exhibitions are marked in the same way as the SPA Inter-Club competitions and Biennial Exhibition, with each of 3 selectors marking from 2 to 5. A rough guide would be: 2 - the image is not up to standard; 3 - the image is OK but not a likely 'acceptance'; 4 - I want the image in the exhibition; 5 - a must acceptance/possible award. A wide range of work is accepted and some have categories such as Scapes, Creative or People as well as Colour, Monochrome and Nature.

You will be familiar with the need for impact as the images are only viewed for a short time. Originality and quality are equally important. When trends appear only the very best with a more individualistic approach are usually successful. I have judged at this level and seen some wonderful images but also been so disappointed when images with great potential are technically poor.

All the BPE exhibitions have PAGB Patronage, and award medals, ribbons and certificates. You can work towards the BPE Crown Awards, starting at 25 acceptances for BPE1\*, working up to 300 for BPE5\*, followed by ABPE and FBPE. For the ABPE a further 100 acceptances are needed along with 20 awards from at least 10 images and these are the most challenging (there are currently 56 holders of this award). The images shown here have received Judges Awards in this process.

## What's That???

The number of photographers in the South-East who enter these exhibitions is very small. Two I am aware of who have started entering in recent years have been delighted when they have started to achieve the awards. Roger Reynolds was the first recipient of the FBPE after this level was introduced in 1998 and, of 31 nationwide, remains the only holder in the SPA region.

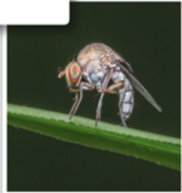
There are currently 17 exhibitions, most for PDIs and a few for prints or both. Entering PDIs is very straightforward with the upload systems in use. There is no requirement to enter both prints and PDIs and I have never sent prints. Fees start around £6 for 4 images, rising to £15-£18 for 12 images. Links to each exhibition, and details of the Crown Awards can be found at <http://www.britishphotographicexhibitions.org.uk/>



You may also be aware of the FIAP distinctions. These relate to International Exhibitions and there are a number based in the UK. To achieve these it is necessary to include some print acceptances and to enter overseas exhibitions. More details can be found at <http://www.thepagb.org.uk/fiap/fiap-distinctions/>

*Rosemary Wilman  
HonFRPS ABPE AFIAP APAGB  
Epsom CC & Molesey PC*

# RPS Digital Imaging Group Meetings in the area



SOUTH EAST CENTRE

**Rachael Talibart  
& Ann Healey ARPS**  
**DIGITAL CAPTURE  
OF THE  
NATURAL WORLD**

Sunday 9 June 2019 ~ Maidstone, Kent

## DIG South East: Rachael Talibart and Ann Healey bring us Digital Capture of the Natural World

09 June 2019

10:00 - 15:30

Cornwallis Academy  
Hubbards Lane  
Maidstone  
United Kingdom  
ME17 4HX

[View map →](#)

Group Member £10.00 ⓘ

RPS Member £14.00 ⓘ

Non RPS Member £18.00 ⓘ

[Information pack \(PDF, 543 KB\) →](#)



THAMES VALLEY CENTRE

**Iain McGowan FRPS**  
**YET MORE FROM  
THE GARDEN SHED!  
& Millennium Cup  
Print Competition**

Sunday 20 October 2019 ~ Wokingham, Berkshire

## DIG Thames Valley: Iain McGowan FRPS - Yet more from the Garden Shed!

20 October 2019

10:00 - 15:30

Wokingham, Berkshire  
Wooshill Community Hall  
Emmview Close  
Wooshill  
Wokingham  
United Kingdom  
RG41 3DA

[View map →](#)

Group Member £8.00 ⓘ

Non RPS Member £15.00

RPS Member £12.00

[Book by post \(PDF, 103.1 KB\) →](#)

[Information pack \(PDF, 207 KB\) →](#)



SOUTH EAST CENTRE

**Joan Blease**  
**Bad Start - Great Finish**  
Photographer and Digital Artist  
Joan enjoys blurring the lines between  
conventional art and photography

Sunday 1st September 2019 ~ Maidstone, Kent

## DIG South East: Joan Blease FBPE, MPAGB, EFIAP with Bad Start - Great Finish

01 September 2019

10:00 - 03:30

Maidstone  
Cornwallis Academy  
Hubbards Lane  
Linton  
Maidstone  
United Kingdom  
ME17 4HZ

Non RPS Member £13.00

RPS Member £10.00

Group Member £8.00

[Information pack \(PDF, 543.1 KB\) →](#)

[Book online →](#)



THAMES VALLEY CENTRE

**Guy Edwardes**  
**SEEING THE LIGHT**  
25 years of  
landscape &  
nature photography

Sunday 15 September 2019 ~ Wokingham, Berkshire

## DIG Thames Valley: Guy Edwardes - Seeing the Light - 25 years of landscape and nature photography

15 September 2019

10:00 - 15:30

Wokingham, Berkshire  
Wooshill Community Hall  
Emmview Close  
Wooshill  
Wokingham  
United Kingdom  
RG41 3DA

[View map →](#)

Group Member £8.00 ⓘ

Non RPS Member £15.00

RPS Member £12.00

[Book by post \(PDF, 103.1 KB\) →](#)

[Information pack \(PDF, 207 KB\) →](#)

# *Molesey Photographic Club*

## **32<sup>nd</sup> Annual Exhibition**

**3<sup>rd</sup> - 8<sup>th</sup> June 2019**

*Free Admission*  
*Refreshments*

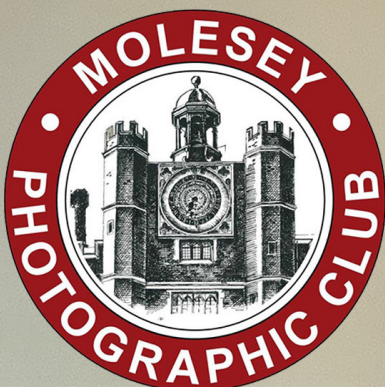


*Mon - Thurs* 11.00am - 8.00pm

*Fri* 11.00am - 5.00pm

*Sat* 11.00am - 4.00pm

**East Molesey Methodist Church**  
**Manor Road, East Molesey, KT8 9JU**



*Photograph by Lisa Edie*

[www.moleseyphotographicclub.co.uk](http://www.moleseyphotographicclub.co.uk)



PRESS RELEASE  
FOR IMMEDIATE RELEASE

April 2019

## 64<sup>th</sup> Annual Exhibition Carshalton Camera Club

The 64<sup>th</sup> Annual Exhibition of the Carshalton Camera Club will take place on Saturday 8<sup>th</sup> June 2019 at Carshalton Methodist Church, Carshalton, Surrey, SM5 3DE.

Gill Peachey LRPS will officially open the exhibition at 11.00am. She will award the Roy King Trophy for the Best Panel.

The exhibition will be open between 10.00am and 5.00pm. Admission is free.

Throughout the day there will be a chance to take part in a raffle, buy light refreshments and vote for your favourite pictures.

Members of the club will be present to talk about the pictures on display, the club's activities and photography in general.

[www.carshaltoncameraclub.org.uk](http://www.carshaltoncameraclub.org.uk)

###

### Notes to Editors

Carshalton Camera Club is open to everyone who has an interest in photography. Visitors and new members are always welcome.

Carshalton Camera Club is affiliated to:  
The Federation of South London Photographic Societies  
The Surrey Photographic Association  
The Photographic Alliance of Great Britain through the Surrey Photographic Association

The club meets every Monday in Lower Park Hall, Carshalton Methodist Church, Ruskin Road, Carshalton, SM5 3DE. Meetings start at 7.30 for 8.00pm from September through to June except for Bank Holidays.

For Further information please contact  
Darren Pullman - Publicity Secretary  
Email: [darrenpullman@mac.com](mailto:darrenpullman@mac.com)  
Telephone: 020 8641 6210

Woking Photographic Society

Annual Exhibition  
at  
the National Trust's  
Dapdune Wharfs  
Visitor Centre  
Guildford

August 4-31 (except 17-18)

Ludshott Photographic Club

Exhibition of Prints  
  
10.00-17.00  
21st September 2019  
at  
the Holme School in Headley  
GU35 8PQ

# MALDEN CAMERA CLUB

## 2019 ANNUAL EXHIBITION

Friday 12th July 2019 from 10 a.m. to 5 p.m.

Saturday 13th July from 10 a.m. to 4 p.m.



*"Rustic" by Anita Leicester*

## FREE ADMISSION

**NEW MALDEN METHODIST CHURCH**  
**49 HIGH STREET, NEW MALDEN, KT3 4BY**



# Photography Exhibition

4<sup>th</sup> - 15<sup>th</sup> June 2019

**Bourne Hall**

Spring Street, Ewell, KT17 1UF



[www.epsomcc.org.uk](http://www.epsomcc.org.uk)

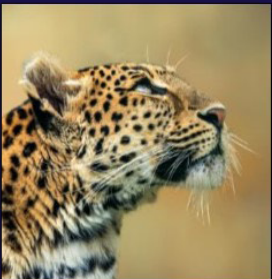
---



# PHOTO



# 2019



## CROYDON CAMERA CLUB - ANNUAL EXHIBITION

THE CLICK CLOCK GALLERY, KATHERINE STREET, CROYDON

3rd to 28th June 2019

Free entry

[www.croydoncameraclub.org.uk](http://www.croydoncameraclub.org.uk)

Vote for your favourite  
image online:



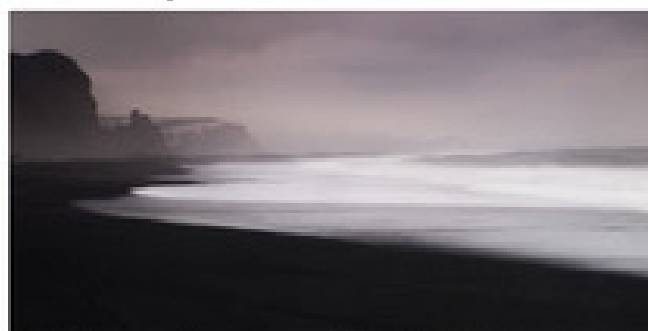
# THE ART OF LANDSCAPE

## Denbies Vineyard Dorking

15th July - 21st July 2019



Eddie Hyde ARPS



Steve Kingswell ARPS AFIAP

## ARPS Photography Exhibition



Tim Clarke



Vanda Ralevska

Denbies Wine Estate [www.eddiehydephotography.zenfolio.com](http://www.eddiehydephotography.zenfolio.com)  
London Road  
Dorking, Surrey  
RH5 6AA

[www.imagesbytimclarke.co.uk](http://www.imagesbytimclarke.co.uk)

[www.stevekingswell.com](http://www.stevekingswell.com)

[www.mylenscapes.co.uk](http://www.mylenscapes.co.uk)

Opening Times  
Mon - Sun 9.30 a.m - 5.30 p.m

[tim@countrypictures.co.uk](mailto:tim@countrypictures.co.uk)

Tel: 01483 268310



**You are invited by  
Horsham Photographic Society  
to enter our  
Open Photography  
Competition 2019**

**Open to Residents of Horsham District  
Subject: Wonderful Sussex**

**Closing Date: 16 July 2019**

<b>under 18s</b>	<b>£1 per print</b>
<b>18s and over</b>	<b>£2 per print</b>

**for the entry form and rules please visit:  
[www.horshamphotographicsociety.co.uk](http://www.horshamphotographicsociety.co.uk)**

**Winning photographs will be exhibited at  
Horsham Museum and Art Gallery  
throughout September 2019**

# Congratulations...

...to Justin Cliffe of Woking PS and Kath Phillips of Windlesham and Camberley CC on being enrolled as an Associate of the Royal Photographic Society following their submissions in Travel Photography in March;

...to Mark Cornick ARPS (October 2018)

All our successful ARPS panels were held for use at Advisory Days!

...to Marilyn Taylor of W&CCC and Guildford PS on achieving the Diploma of the Photographic Association of Great Britain at the April adjudication;

...to Peter Chamberlain of Molesey in achieving CPAGB in September 2018

...to Sue Hall from Old Coulsden, Colette Patto from Godalming and Darren Pullman from Carshalton on achieving CPAGB in April 2019.

...to Angela Thompson (Sept. 2018) and Gaby Phillips (April 2019), both of Molesey on being awarded LRPS

...and to all those about whose successes we do not know - there must be others out there!

We would love to be able to celebrate everyone's success so please email [newsletter@surreypa.org.uk](mailto:newsletter@surreypa.org.uk) when you have news to share.

# Diary

**June 2019**

Inter-Federation Print and PDI

**Saturday, July 13th Warwick**

PAGB Inter-Club PDI

(SPA represented by Godalming PS and Kinston CC)

**Saturday, 19th October 2019**

SPA AGM

SPA Individual Print and PDI

**Saturday, October 27th**

PAGB Inter-Club Print Competition

SPA represented by Godalming PS and Richmond and Twickenham PS

**October**

PAGB Cup (Print)

Individual Clubs

**Saturday, November 23rd**

SPA Inter-Club Print



A final image from Agnès-Proudhon-Smith: this from her successful ARPS panel depicting Valencia City of Arts and Sciences.